



TEXAS A&M
AGRILIFE
EXTENSION

District 11 4-H Fashion Show & Storyboard Contest

Information and Guidelines

April 11, 2014
Victoria Mall
Victoria, Texas

January 2014

Coastal Bend District 11 4-H Fashion Show & Storyboard Contest
April 11, 2014
Victoria Mall, Victoria, Texas

TABLE OF CONTENTS

Fashion Show Event Information	2
Objectives	2
Age Classification	2
Americans with Disabilities	2
Certification	3
Eligibility	3
Divisions.....	4
Buying Division Guidelines	4
Construction Division Guidelines	4
Senior Category Descriptions	5
Junior & Intermediate Category Descriptions	5
Required Entry Materials	6
Commentaries.....	6
Entry Fee	6
District Deadline.....	7
County Deadlines.....	7
Judge Recruitment.....	7
Judging Process	8
Tie Breaker Procedure.....	8
Pictures	9
Awards	9
Appeals Committee.....	9
Natural Fiber Competition Information	10
Fashion Storyboard Contest Information	13
Fashion Storyboard Label.....	17
Schedule	18
Participant Letter (To be distributed to first, second, and third place contestants at County Fashion Show)	19

Attachments:

- Texas 4-H Fashion Show Buying Entry Form
- Texas 4-H Fashion Show Construction Entry Form
- District 11 Fashion Show Buying Entry Form (Jr & Intermediates only)
- District 11 Fashion Show Construction Entry Form (Jr & Intermediates only)
- Texas 4-H Fashion Show Scoresheet (all ages)
- Texas Natural Fiber Entry Form (Seniors - 2 pages)
- Texas Natural Fiber Worksheet (Seniors - 1 page)
- Texas Natural Fiber Competition Scoresheet (Seniors - 1 page)
- Storyboard Label (All ages)
- Storyboard Scoresheet (All ages - 1 page)

Coastal Bend District 11 4-H Fashion Show & Storyboard Contest
April 11, 2014
Victoria Mall, Victoria, Texas

INFORMATION AND GUIDELINES

FASHION SHOW EVENT INFORMATION

The 4-H Fashion Show is an optional activity open to all 4-H members who have completed a clothing project and competed and placed in the top three in the county Fashion Show competition. The purpose of the following requirements is to provide as fair an opportunity as possible for participation by as many outstanding 4-H members as possible. The requirements given below apply to all 4-H members who plan to participate in the district contest. Failure to comply with the requirements will result in disqualification or penalty deductions from the final score.

OBJECTIVES

To recognize 4-H members who have excelled in clothing projects and exhibit skills in the following:

- Application of knowledge of fibers and fabrics to wardrobe selection.
- Clothing construction or comparison shopping.
- Fashion interpretation and understanding of style.
- Good grooming and poise.
- Modeling and presentation of themselves and their garments.

AGE CLASSIFICATIONS

Please make sure all participants are entered in the correct division. Descriptions of age divisions are:

Senior Division - Contestants must have passed their 14th birthday but not have had their 19th birthday as of August 31, 2013.

Intermediate Division - Contestants must have passed their 11th birthday, but not have had their 14th birthday as of August 31, 2013.

Junior Division - Contestants must have had their 9th birthday (or be 8 and in the third grade) and not have had their 11th birthday as of August 31, 2013.

AMERICANS WITH DISABILITIES ACT

Individuals who require an auxiliary service or accommodation in order to participate need to contact the District 11 Office at 361/265-9203 no later than April 1, 2014, in order for proper arrangements to be made.

CERTIFICATION

Participants must be certified by their county Extension agent as the top 3 scoring individuals in each of the eight entry categories in the junior, intermediate or senior division of the County 4-H Fashion Show for district participation. Each county has the possibility of having 72 contestants compete in the District 4-H Fashion Show.

To further clarify, the following contestants from each county will be eligible to enter the District Fashion Show.

Construction Division:

- 12 Seniors: Top 3 scoring individuals from each of the four categories
- 12 Intermediates: Top 3 scoring individuals from each of the four categories
- 12 Juniors: Top 3 scoring individuals from each of the four categories

Buying Division:

- 12 Seniors: Top 3 scoring individuals from each of the four categories
- 12 Intermediates: Top 3 scoring individuals from each of the four categories
- 12 Juniors: Top 3 scoring individuals from each of the four categories

ELIGIBILITY

All contestants must be enrolled in 4-H and actively participating as a 4-H member. The 4-H member must also be actively participating in the 4-H clothing and textiles project during the 2013-2014 4-H year. All garments to be judged must have been purchased or constructed during participation in a 4-H clothing project between June 15, 2013 and the District 4-H Fashion Show.

SENIORS ONLY - Once a contestant has won first place at the state contest in one division, (Buying or Construction), he/she is no longer eligible to compete in that division.

According to the Texas Education Code, a 4-H member must be deemed eligible to compete in an event that takes place on a Saturday.

All 4-H youth, including youth in public, private, and/or home school must adhere to the following guidelines regarding extracurricular activities and academic eligibility:

Complete a Declaration of Eligibility Form

or

Name of 4-H member must appear on a list of eligible students to participate in a specific extracurricular activity signed by the school principal or designee.

If a 4-H member is ineligible for a 4-H competitive event, the agent must notify the 4-H member, his/her parents, and the district office, by letter, of this situation. If the parent has any questions, he/she should be referred to the school administrator.

DIVISIONS

The Fashion Show has two divisions: buying and construction.

A 4-H member may enter only one Fashion Show category in only one division.

A 4-H member must choose a division at the county level and compete in that division at all levels. The entry worn at the district contest must be the one worn at the county contest. Accessories such as shoes, jewelry, hat, gloves, and scarves may be changed until the time that the Division Worksheet has to be submitted to the District Office.

All garment entries must be worn during judging. Garments worn must make a complete ensemble and must ordinarily be worn together. Only garments and accessories worn during judging can be worn during the public fashion show. No additional garments may be carried, with the exception of props (i.e. show stick, tennis racket, golf club, teddy bear).

BUYING DIVISION GUIDELINES

In the Buying Division, comparison shopping may include department stores, boutiques or specialty stores, mail order catalogs, outlet stores, re-sale shops, and professional seamstresses. Three **different** sources must be used, not three sections of a single store.

During comparison shopping, if it is determined that paying a professional seamstress (at normal retail cost) to construct the ensemble is the best choice for purchasing a garment, list the cost of fabrics, patterns, notions, and other supplies and payment to the seamstress as the cost of the garment. Enter the appropriate information in the column headed ΔGarment/Ensemble Selected@ on the Buying Division Worksheet. Renting a garment is not permitted.

All garments worn (garments that are visible, i.e. blouse under jumper) during the interview process must be included in the buying worksheet. Information from the worksheet will be evaluated by a panel of judges, so the worksheet needs to be complete. Judges will ask questions about the garments and the comparison shopping experience.

CONSTRUCTION DIVISION GUIDELINES

Garments may be constructed by sewing, knitting, or crocheting using new or recycled materials. Accessories may be purchased.

Seniors: All garments worn (garments that are visible, i.e. blouse under jumper) during the interview process must be constructed. Accessories may be purchased.

Juniors & Intermediates: It is not necessary to construct all garments worn during the contest. For example, a 4-H member may construct a skirt and purchase a blouse to wear with it. Only the skirt will be judged on construction, and the blouse will be judged as an accessory. Enter the appropriate information on the Construction Division Worksheet. Information from the worksheet will be evaluated during the judging so the worksheet must be complete.

SENIOR CATEGORY DESCRIPTIONS

Note: It is the responsibility of the 4-H member and parent that a garment is entered in the appropriate category. Participants should consult with their county Extension agent and project leader when selecting the appropriate category for a garment. The appropriate garment category should be determined by the style, fabric, and use of the garment.

CONSTRUCTION CATEGORY DESCRIPTION

Everyday Living	Includes casual sportswear, weekend-wear, sleepwear, clothing for school, casual after-school events, or hanging out with friends
ReFashion	The result of modifying existing clothing or fabric item (such as table cloth or curtain) into something more fashionable. The main purpose of ReFashion is creativity, as well as sewing skills. The member designs and sews a wearable garment from previously used garments or fabric item. The completed garment is different from its original use, not just an alteration. (Examples: neck ties sewn together to form a skirt or taking old t-shirts and making them into a skirt)
Semi-Formal to Formal	Entry must be designed for semi-formal to formal occasions and made from fabrics intended for the same. Original material must be fabric and not from recycled items.
Theatre/Costume	Garment intended for use as a costume, which would include stage production. May be sewn from fabric or from another garment. These garments may be unusual or innovative materials; imaginative but wearable.

BUYING CATEGORY DESCRIPTION

Business/Interview Attire	Entry should be an outfit you would wear for a job interview, scholarship interview, job fair, or other professional event. <ol style="list-style-type: none"> 1. Professional – This is a more traditional, conservative approach (e.g., business suit or blazer, tie and dress slacks for men; business suit, pantsuit, or jacket and dress for women) and may vary by employer or industry. 2. Business Casual – This trend is more relaxed and comfortable but demonstrates good judgment in choices and displays a neat appearance (e.g., polo shirt, shirt with a collar or sweater, khakis or other slacks, dress or casual leather shoes for men and women; moderate length dress or skirt for women).
Fantastic Fashions under \$25	This category is designed to expand the 4-H member's shopping experience to include different shopping venues. Outfits must be purchased at a garage sale, consignment store, Goodwill, Salvation Army, or other retail business. Receipts are required for everything that is visible during the interview, except shoes. Receipts for garage sales can be handwritten. This includes jewelry and accessories. Do not need to account for sales tax.

Semi-Formal to Formal	Entry must be designed for semi-formal to formal occasions and made from fabrics intended for the same. This includes men's suits and tuxedos and women's dressy dresses, formal gowns, wedding dresses, and bridesmaid dresses.
Special Interest	Entry should be a specific outfit that you NEED to know how to purchase wisely. Entry should be something that reflects a special interest of the participant, such as equestrian clothing and riding apparel, dance costumes, hiking clothing, or rock climbing clothing.

JUNIOR AND INTERMEDIATE CATEGORY DESCRIPTIONS

CONSTRUCTION CATEGORIES

Everyday Living	Includes casual sportswear, weekend-wear, sleepwear, clothing for school, casual after-school events, or hanging out with friends
ReFashion	The result of modifying existing clothing or fabric item (such as table cloth or curtain) into something more fashionable. The main purpose of ReFashion is creativity, as well as sewing skills. The member designs and sews a wearable garment from previously used garments or fabric item. The completed garment is different from its original use, not just an alteration. (Examples: neck ties sewn together to form a skirt or taking old t-shirts and making them into a skirt)
Dressy	For ensembles work to dressy activities such as dinner dates, theater, banquets, and job/scholarship interviews. Examples are men's and women's suits, dressy dresses, and dressy coats.
Special Interest	Garment intended for use as a costume, which would include stage production. May be sewn from fabric or from another garment. These garments may be unusual or innovative materials; imaginative but wearable.

BUYING CATEGORIES

Everyday Living	Includes casual sportswear, weekend-wear, sleepwear, clothing for school, casual after-school events, or hanging out with friends
Fantastic Fashions under \$25	This category is designed to expand the 4-H member's shopping experience to include different shopping venues. Outfits must be purchased at a garage sale, consignment store, Goodwill, Salvation Army, or other retail business. Receipts are required for everything that is visible during the interview, except shoes. Receipts for garage sales can be handwritten. This includes jewelry and accessories. Do not need to account for sales tax.
Dressy	For ensembles work to dressy activities such as dinner dates, theater, banquets, and job/scholarship interviews. Examples are men's and women's suits, dressy dresses, and dressy coats.
Special Interest	Entry should be a specific outfit that you NEED to know how to purchase wisely. Entry should be something that reflects a special interest of the participant, such as equestrian clothing and riding apparel, dance costumes, hiking clothing, or rock climbing clothing.

REQUIRED ENTRY MATERIALS

Please enclose required entry materials for each contestant in a **plain manila folder** with the following information on a label in the upper right hand corner (folder positioned as it would be in a file drawer):

BUYING DIVISION Holly Fashion Hollywood County Specialty Senior
--

All Senior Contestants must have the following entry materials in their folders:

- 2014 Texas 4-H Fashion Show Entry Form
- Three copies of the 2014 Texas 4-H Fashion Show Scoresheet (white paper) with contestant information completed

All Intermediate Contestants must have the following entry materials in their folders:

- 2014 District 11 4-H Fashion Show Entry Form
- Three copies of the 2014 Texas 4-H Fashion Show Scoresheet (white paper) with contestant information completed

All Junior Contestants must have the following entry materials in their folders:

- 2014 District 11 4-H Fashion Show Entry Form
- Three copies of the 2014 Texas 4-H Fashion Show Scoresheet (white paper) with contestant information completed

COMMENTARIES

All 4-H Fashion Show Contestants will be required to submit a commentary to be read during the Style Show. Each contestant will be required to enter a commentary when registering on 4-H CONNECT. The commentary will be limited to four items of information:

1. Name
2. County
3. Category
4. One thing 4-H member learned in the Clothing & Textiles Project (limited to one sentence).

NOTE: Please type the commentary as it is to be read during the style show.

ENTRY FEE

Each 4-H Fashion Show participant must pay an entry fee of \$10.00 when registering via 4-H CONNECT. Late registration will be available from March 22 through 6 for an additional \$25. **No refunds will be given for any reason!**

DISTRICT DEADLINE

All 4-H Fashion Show contestants must also be registered via **4-H CONNECT by 12:00 Midnight on March 21, 2014**. Late registration will be available from March 22 through 6 for an additional \$25. The registration process will officially be closed at this time and will NOT re-open. County Extension Agents must “certify” all entries on 4-H CONNECT within 2 business days after the close of registration.

All participant folders must be sent to the District Office with a postmark deadline of March 21, 2014. All counties are expected to adhere to this deadline. Exceptions will not be granted!

COUNTY DEADLINES

Counties may set individual deadlines as needed. However, all counties and participants are required to adhere to the district deadline. Therefore, it is important that counties conduct their County 4-H Fashion Show accordingly to allow for district entries to be submitted on time.

JUDGES RECRUITMENT

All counties are asked to recruit 2-3 volunteers to serve as judges for the Fashion Show. Each person recommended to judge should be qualified to serve as a judge of the District Fashion Show, with prior judging experience. Names and addresses should be submitted on the Judges Recruitment Form and sent (fax or e-mail) to the District Office **by March 21, 2014**. Please submit only names of adult leaders who have agreed to serve as judges and who will be present for the orientation as announced on the schedule. All FCS and 4-H agents are also expected to serve as a judge or help where assigned.

JUDGING PROCESS

Contestants will be called to line up prior to going into the judging room. Each contestant will be escorted into the appropriate judging room by a leader. To start the interview, each participant will introduce him-/herself to the judges with his/her name and county. At this time, the 4-H member may also briefly model for the judges, so they may view the garment being judged from all angles. Presentations are **not permitted** during the interview process.

Judges will evaluate each participant for a maximum of seven (7) minutes. During the interview process, judges will ask the participant questions related to the garment constructed and/or purchased. There are no sample questions for contestants to study and/or memorize in preparation for the interview. Instead, questions will be based on the criteria on the scoresheet appropriate for each age division, and contestants should be prepared to answer questions based on the following:

- Knowledge of fiber and fabric characteristics, uses, and care
- Identification of fiber source, generic name, and characteristics
- Identification of fabric weave or knit, fabric type, and fabric characteristics
- Knowledge of garment care
- Ability to evaluate garment quality and apply knowledge
- Special techniques/sewing methods used in construction of garment

- Garment selected and division eligibility requirements
- Appearance, fit, and fashion ability
- Accessory selection
- Knowledge and skills learned in clothing and textiles project and shared with others

If judges have completed the interview process before the maximum time allotment, the contestant may be dismissed from the judging area. After the seven minutes interview time is complete, the judges will have three (3) minutes to mark the scorecard and write comments. All judging scores will be totaled by a tabulation committee to determine top three placings in each category.

TIE BREAKER PROCEDURE

If ties should occur, the ties shall be broken using partial scores in the following order.

1. Subtotal Score: Ability to evaluate garment quality and apply knowledge.
2. Subtotal Score: Knowledge of fiber and fabric characteristics, uses, care.
3. Subtotal Score: Appearance, fit, and fashion ability.
4. Single Score: Garment meets the competition eligibility requirements.
5. Single Score: Garment is well made.
6. Single Score: Garment style makes good use of the fiber and fabric characteristics.
7. Single Score: Modeling and presentation skills, poise, and grooming.
8. Single Score: Garment and accessories are fashionable and appropriate.
9. Single Score: Garment is an appropriate fit for the body.

PICTURES

Pictures will be taken of county groups during the judging process, as contestants are waiting to be judged and/or for results to be announced. The pictures will be e-mailed to each county office after the Fashion Show.

AWARDS

Awards will be announced and presented at the conclusion of judging and style show.. Plaques or a similar award will be presented to the first place contestants of each category. Second and third place contestants in each category will receive a rosette. Participation ribbons will be awarded to all contestants in the Fashion Show if available.

APPEALS COMMITTEE

Should a discrepancy/problem arise, it shall be remanded to the Appeals Committee for a ruling prior to the conclusion of the contest. All rulings by the Appeals Committee shall be final. The Appeals Committee shall be made up of the Fashion Show Committee, with the District Extension Administrator and 4-H Specialist serving as Ex-officio members (present, not voting).

NATURAL FIBER COMPETITION SENIORS ONLY!

OBJECTIVES

- To encourage the study, promotion, and use of cotton, wool and mohair, the natural fibers produced in Texas.
- To recognize 4-H members who do outstanding work in a clothing project that includes the study of cotton or wool and mohair.
- To recognize 4-H members who use their knowledge of natural fibers to sew or buy garments or ensembles that contain 60% or more cotton fiber, wool fiber, or wool and mohair fibers.

ELIGIBILITY

The purpose of the following requirements is to provide as fair an opportunity as possible for participation by as many outstanding 4-H members as possible. Failure to comply with the requirements will result in disqualification or penalty deductions from the final score.

1. A 4-H member must have passed their 14th birthday but not their 19th birthday on August 31, 2013, to be eligible for competition.
2. Participants must complete a 4-H clothing project between June 15, 2013, and the district contest. All garments/ensembles to be judged must have been purchased (renting a garment is not permitted in the buying division) or constructed (construction division) during participation in a 4-H clothing project between June 15, 2013, and the district contest.
3. The Natural Fiber Contest has two categories; cotton and wool/mohair. The entry in the Natural Fiber contest does not have to be the same entry as the Fashion Show Buying or Construction entry. The 4-H member must choose a category at the county level and compete in that category at all levels. The entry worn at the district contest must be the one worn at the state contest. Accessories such as shoes, jewelry, hat, gloves, and scarfs may be changed, but changes must be included on the paperwork. The appropriate garment category should be determined by the style, fabric, and use of the garment. No one may change divisions or categories between district and state contests.

A. COTTON

Each garment entered must contain a minimum of 60% cotton. Knowledge of fiber characteristics, production and end use is required.

B. WOOL/MOHAIR

Each garment entered must contain a minimum of

- 60% wool and 40% other fiber
- 60% mohair and 40% other fiber
- 60% blend of the two fibers and 40% other fiber
- 100% wool/mohair blend is also acceptable.

Knowledge of fiber characteristics, production and end use is required.

4. The garment selected can be constructed or purchased. A complete outfit, except for a blouse or shirt under the garment, is made of the eligible fashion fabric. Example: Jacket and pants made of wool. Shirt or blouse does not need to be made of wool. A full length

coat made of eligible fashion fabric. It may be worn over a garment of any fiber content. Lining fabric, interfacing fabric, and trims are not required to meet the fiber content requirements.

REQUIRED ENTRY MATERIALS

4-H members competing in the Natural Fibers competition must submit an additional set of entry materials! Please enclose the required entry materials for each contestant in a plain manila folder with the following information on a label in the upper right hand corner (folder positioned as it would be in a file drawer):

NATURAL FIBER Holly Fashion Hollywood County Cotton
--

To enter, the contestant must have the following materials in his/her entry folder:

- 2014 Texas 4-H Fashion Show Natural Fiber Entry Form
- Three copies of the Natural Fiber Scoresheet (white paper) with contestant information completed

In addition to registering for the District 11 4-H Fashion Show on **4-H CONNECT by March 21, 2014**, entry materials must be mailed to the District Office with a postmark deadline of March 24, 2014.

ENTRY FEE

Each 4-H Fashion Show Natural Fiber participant must pay an entry fee of \$10.00 when registering via 4-H CONNECT. Late registration will be available from March 22 through 6 for an additional \$25. **No refunds will be given for any reason!**

DISTRICT DEADLINE

All 4-H Fashion Show contestants must also be registered via **4-H CONNECT by 12:00 Midnight on March 21, 2014**. . Late registration will be available from March 22 through 6 for an additional \$25. The registration process will officially be closed at this time and will NOT re-open. County Extension Agents must “certify” all entries on 4-H CONNECT within 2 business days after the close of registration.

JUDGING CRITERIA

If the Entry Form and Natural Fiber Worksheet do not show that the entry meets the eligibility requirements, the entry will be disqualified.

The contestant’s entry form, worksheet, and interview will be used to evaluate knowledge about the fiber’s characteristics, uses in apparel, and ability to apply knowledge to the selection process. The contestant will model the garment for evaluation of the appearance, fit, and fashion ability.

The judging process for the Natural Fiber Competition will take place in the same manner as the buying and construction divisions. Please refer to an explanation of this process on page 8.

TIE BREAKER PROCEDURE

If ties should occur, the ties shall be broken using partial score in the following order:

1. Subtotal Score: Knowledge of fiber characteristics and uses
2. Subtotal Score: Ability to apply knowledge
3. Subtotal Score: Appearance, fit, and fashion ability
4. Single Score: Garment is well made and is a good value for its cost

NATURAL FIBER AWARDS

Awards will be announced and presented at the conclusion of judging and the style show.

Plaques or other similar awards will be presented to the first place contestants of each category.

Second and third place contestants in each category will receive a rosette.

Participation ribbons will be awarded to all contestants in the Natural Fiber Competition, if available.

4-H FASHION STORYBOARD *(Replaces Fabric & Fashion Design Contest for all age divisions)*

OVERVIEW

The 4-H Fashion Storyboard is an industry-inspired method of displaying original designs. The best storyboards create vivid visual images that are interesting and appealing to viewers. The storyboard “tells the story” of the designer’s idea. The storyboard includes original illustrations and flats, as well as additional materials (such as photos from the Internet or magazines, paper, fabric swatches, patterns, etc.) that have influenced the unique design.

PURPOSE

The purpose of the Fashion Storyboard contest is to give 4-H members an opportunity to create a storyboard of their original design. It also provides the members an opportunity to gain knowledge of the career responsibilities of a fashion designer and illustrator, enhance creativity and originality, and develop visual communication skills.

DESIGN BRIEF

The following design brief serves as the direction for the 2014 Fashion Storyboards. 4-H members should create their Fashion Storyboard around their interpretation of the design brief.

Geometry Lesson

It’s time to get graphic with playful geometric monochromatic patterns. Anyone can do it. It is all in the angles. Use your math skills to create your original design.

ELIGIBLE ENTRIES

There is no limit on the number of entries that may be submitted from each county. All contestants must be enrolled in 4-H and actively participating as a 4-H member. The 4-H member must be actively participating in the 4-H clothing and textiles project during the 2013-2014 4-H year. All entries must have been constructed/assembled during participation in a 4-H clothing and textiles project between June 15, 2013 and the District Fashion Show.

JUDGING OF ENTRIES

Entering the competition is by submitting the Fashion Storyboard only. There will not be an interview. The Fashion Storyboard entries must be turned into your county office by March 21. Youth do not need to be present for judging. Awards will be handed out at the District 11 Fashion Show.

ENTRY FEE

Each 4-H Fashion Storyboard participant must pay an entry fee of \$10.00 when registering via 4-H CONNECT. Registration deadline is March 21. (If you are entering another fashion show event, you will only be charged one fee of \$10.00) . Late registration will be available from March 22 through 6 for an additional \$25. **No refunds will be given for any reason!**

DISTRICT DEADLINE

All Storyboard contestants must be registered via 4-H CONNECT by 12:00 Midnight on March 21, 2014. . Late registration will be available from March 22 through 6 for an additional \$25. The registration process will officially be closed at that time and will NOT re-open. County Extension Agents must “certify” all entries on 4-H CONNECT within 2 business days after the close of registration.

DISPLAY AND AWARDS

Storyboards will be on display at the District 11 4-H Fashion Show on Friday, April 11, 2014. Placing will be announced and awards will be distributed at the District Fashion Show. Participants are encouraged to attend the event but are not required.

GENERAL RULES

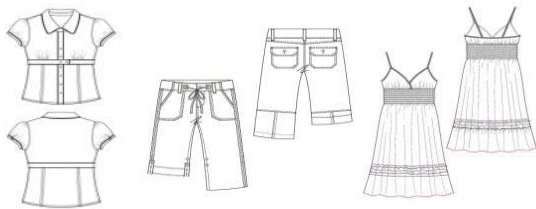
1. **Participation and Level of Competition.** A 4-H member may enter only one storyboard. Contestants advance from county to district. Participation in the Fashion Storyboard competition at Texas 4-H Roundup is for Senior Texas 4-H members who have placed 1st, 2nd, or 3rd in their district contest in each category.
2. **Entry of Storyboard.** Each storyboard must be created by the 4-H member. Fashion Storyboard layouts should include original illustrations and flats, as well as additional materials that have influenced their unique design. 4-H members may choose to manually affix the pieces of their layout to their storyboard, or computer-generated layouts can be printed and affixed to the foam core or mat board. All items need to be securely adhered to the board. It is the 4-H member’s responsibility to affix all components of their layout for secure transportation.
3. **Submission of Storyboard.** Entering the competition is by submitting the Fashion Storyboard only. There will not be an interview.
4. **Identification of Storyboard.** The Fashion Storyboard Label must be securely affixed to the back of the storyboard. The label **MUST** be legibly printed or typed and **MUST** be complete, including the answer to the Originality of Design question. The 4-H member should not put his/her name on the front.
5. **Number of garments designed.** Focus on **one** garment/outfit for the storyboard. Contestants may provide up to two (2) variations of the original design.
6. **Categories.** The following is a list of the categories and descriptions. Each storyboard should be entered into one category. A 4-H member may enter only one storyboard.
 - a. **Wearable:** Clothing that can be worn. Includes items such as pants, shorts, skirts, blouses, sweaters, coats, dresses, etc.
 - b. **Accessory:** Includes items such as belts, purses, bags, hats, etc.
 - c. **Jewelry:** Includes necklaces, bracelets, rings, and earrings.
 - d. **Non-Wearable:** Includes items such as pillows, organizers, holiday items, stuffed animals, items for the home, etc.
 - e. **Pet Clothing:** Includes items that can be worn by a pet or any other animal.

7. **Scoring.** Storyboards will be evaluated based on the 4-H Fashion Storyboard Score Sheet.
8. Each Storyboard must conform to and will be evaluated based on the following, but is not limited to:
 - a. **Visual Appeal/Creativity of Storyboard** – Storyboards should show evidence of creativity by the 4-H member. The layout of the storyboard should illustrate a theme, mood, or spirit of an idea.
 - i. A good storyboard should have a strong focal point.
 - ii. Placement of the inspirational items should allow the eye to flow across all elements of the board without distracting from the design.
 - iii. “White space” or “blank space” should be kept in consideration. Too much or too little white space detracts from the design.
 - iv. Additional photos and other materials can be used to show the inspiration for the design. These additional materials should enhance the storyboard, without taking away from the original design.
 - b. **Quality of Workmanship** – Storyboards should be neat and demonstrate quality of workmanship.
 - c. **Consistent Color Palette** – Use a consistent color palette and theme throughout the board.
 - d. **Fabric Samples, Trims, and Embellishments** – Fabric samples must be included on the board and be appropriate for the design illustrated. Trims and embellishments that would be used on the garment/outfit should be included, if applicable to the design.
 - i. If the exact fabric swatch cannot be found, a “basic swatch” may be used to illustrate fabric type (denim, linen, etc.), and the 4-H member can draw out the detail.
 - ii. Examples of trims and embellishments would be top stitching, piping, buttons, etc.
 - e. **Dimension** – Must use foam core board or mat board. Must be 20" x 30", displayed horizontally or vertically. Do not use poster board.
 - f. **Consistent Theme** – All elements are cohesive and support the design brief.
 - g. **Originality of Designs** – All design illustrations and flats should be the original work of the 4-H member. The design may be hand drawn or computer drawn. No “copying and pasting” from someone’s design as seen on the Internet, in a magazine, or other sources for the original design.
 - h. **Design Detail** – Should include the at least one Illustration and at least one flat.
 - i. *Illustration* – Include at least one main artistic and appropriate fashion illustration. At least one illustration must be on a model/croquis. The model/croquis does not have to be an original drawing and may be traced. See the example on the next page.
 - ii. *Flats* – Include at least one flat. Flats are working drawings that are not on a model/croquis that illustrate other views like you would find on a dressmaker’s pattern envelope. The flats should depict the garment from other views and details.

See the example below.

Flats

showing other views



Illustration

outfit drawn on a model/croquis



Pictures taken from: www.designersnexus.com

- i. **Titles/Labels** – The title for the storyboard must be: **Geometry Lesson**. A subtitle may be used for a more personalized name of the design. Labels may be included to enhance the storyboard or to clarify a point, but they will not be required.
- j. **Design Brief** – Storyboards should follow the design brief and category descriptions.

TEXAS 4-H FASHION STORYBOARD WEBSITE

http://texas4-h.tamu.edu/storyboard/index_storyboard.php

4-H FASHION STORYBOARD LABEL

This label should be cut out and affixed to the back of each storyboard. Label details must be neatly printed or typed. Label information should be COMPLETE!

4-H FASHION STORYBOARD LABEL					
Age Division <i>(please check one)</i> :	<input type="checkbox"/> Junior	<input type="checkbox"/> Intermediate	<input type="checkbox"/> Senior		
Category <i>(please check one)</i> :	<input type="checkbox"/> Wearable	<input type="checkbox"/> Accessory	<input type="checkbox"/> Jewelry	<input type="checkbox"/> Non-wearable	<input type="checkbox"/> Pet Clothing
County:	_____				
Name:	_____				
Birthday:	_____				
4-H Age <i>(as of 8/31/11)</i> :	_____				
<p>I do hereby consent and agree that Texas AgriLife Extension Service, Texas 4-H and Youth Development Program staff have permission to take photographs and/or record video and/or audio of me and/or my property and to use these for 4-H Youth Development educational, promotional, and/or marketing materials. I further do hereby give the right to exhibit any such works publicly or privately, including posting on the Texas 4-H and Youth Development Program website. I waive any rights, claims, or interests I may have to control the use of my identity, the identity of the subject(s), or likeness in the photographs, video, or audio and agree that any uses described herein may be made without compensation or additional consideration. I represent that I have read and understand the foregoing statement, and I am competent to execute this agreement.</p> <p>I have read and understand the foregoing statement, and I am competent to execute this agreement.</p>					
Name <i>(please print)</i> :	_____				
Signature:	_____	Date:	_____		
Parent/Guardian Name <i>(please print)</i> :	_____				
Signature:	_____	Date:	_____		
Agent Name:	_____				
Agent Signature:	_____				
Originality of Design					
In 100 words or less, answer the following prompt in regards to originality: <i>Where did you get the idea for your design? What was your inspiration? What makes your design different from others on the market?</i>					

**DISTRICT 11 4-H FASHION SHOW & STORYBOARD CONTEST
SCHEDULE OF EVENTS
Friday, April 11, 2014**

- 4:00 pm County groups begin check-in Victoria Mall
Based on assigned judging times below (near Dillard’s courtyard)
- 4:30 pm. Judges Orientation Victoria Mall
(check in near Dillard’s courtyard for further instructions)
Judges refreshments will be provided
- 5:00 pm Judging Begins* Victoria Mall
- 5:00 pm - Victoria, Jackson, Calhoun, DeWitt, Goliad
5:30 pm. - Lavaca, Refugio, Bee, Aransas, Wharton
6:00 pm. - Karnes, San Patricio, Matagorda, Fayette
6:30 pm - Colorado, Nueces, Austin, Washington

* Scheduled judging times are approximate due to the allowance of each county to bring the top 3 individuals in each category, division and age group

All contestants are encouraged to arrive at least **30 minutes** prior to the county’s assigned judging time. A contestant who is late will be judged during an empty time slot or must wait until all judging is complete and then be judged depending on judging availability.

Immediately Following Judging (approx 7:30 pm)
Style Show & Recognition Begins Victoria Mall
Modeling by age division/category (near Dillard’s courtyard)
Recognition and announcement of results

4:00 pm – 8:00 pm (or until end of Fashion Show)
4-H Photography on display
Storyboard Exhibit on display

ENJOY DINNER OR A SNACK AT THE MALL FOOD COURT!



MEMO

TO: District 11 4-H Fashion Show Participants

SUBJECT: District 11 4-H Fashion Show
Friday April 11, 2014
Victoria Mall, Victoria, Texas

Congratulations on placing as one of the top three contestants at your County 4-H Fashion Show. You have now earned the privilege to compete in the District 11 4-H Fashion Show, which will be held on Friday, April 11, 2014, at the Victoria Mall in Victoria, Texas.

Important information about the Fashion Show is enclosed, including information about the online registration process. Therefore, we encourage you to read this information carefully in order for you to be fully prepared. Please pay attention to the Fashion Show schedule (page 18), and make a note of the time by which you need to arrive. It is very important that you arrive in time to get ready for the judging process, followed by the Recognition/Style Show.

Again, congratulations on your achievements within the 4-H Clothing and Textiles Project. It is evident that you have worked hard to reach your goals, and have every right to be proud. Good luck at the District 4-H Fashion Show!

Sincerely,

A handwritten signature in blue ink that reads 'Meredith Carter'.

Meredith Carter
District 11 4-H Specialist

Enclosure: District 11 4-H Fashion Show Information and Guidelines

Extension programs of the Texas AgriLife Extension Service are open to all people without regard to race, color, sex, disability, religion, age, or national origin.
The Texas A&M University System, U.S. Department of Agriculture, and the County Commissioners Courts of Texas Cooperating